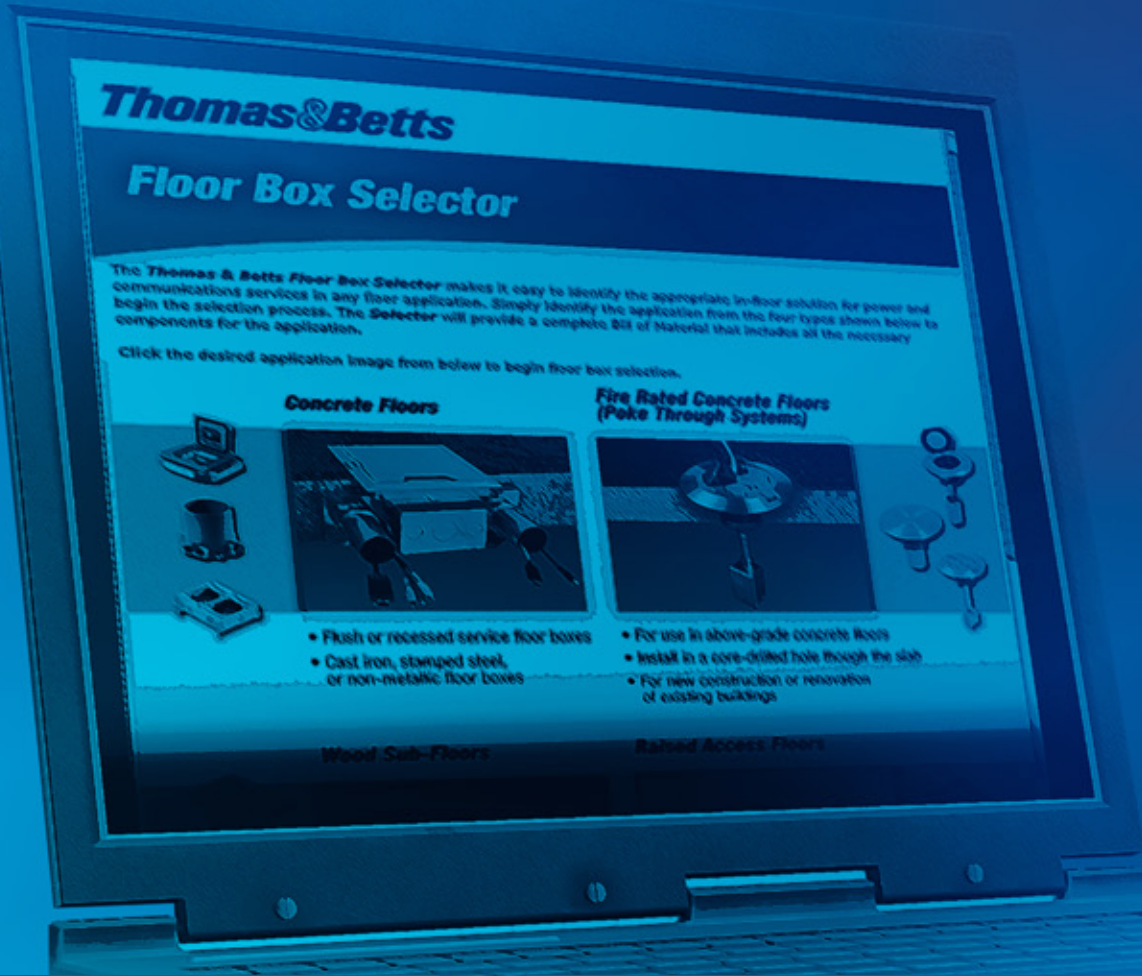


Floor Box Selector HELP Guide





Steel City®



Carlon®

Thomas & Betts Floor Box Selector HELP Guide

Over 100 years ago, the very first Steel City® product was a cast-iron floor box. Today, the Steel City® brand continues to offer innovative, durable, in-floor solutions to meet the demanding requirements of today's commercial construction industry.

Carlon® Floor Boxes represent the broadest offering of cost-effective non-metallic floor box solutions available on the market today.

Regardless of your application, Thomas & Betts makes floor box selection easy

Regardless of the in-floor application, Steel City® and Carlon® Floor Boxes can provide you with a durable, innovative solution for mounting power, voice, data and A/V outlets wherever they are needed. From cost-sensitive residential applications to demanding high-rise commercial construction projects, these products will ensure a quality installation.

Now T&B offers you a powerful new product configurator that will enable you to select a floor box for your application in a matter of minutes. You no longer have to spend hours thumbing through catalogs trying to identify all of the necessary floor box components for a given job. Choose from thousands of different floor box assemblies with just a few clicks...the resulting selection provides you with the applicable floor box assembly matched to your specifications, along with a complete bill of material and related support materials.

To get started, simply go to www.tnb.com/floorboxselect and follow these easy steps as described on the next pages. Now everyone can be an expert by using the T&B Floor Box Selector Guide.

T&B works harder...to make your job easier!

www.tnb.com/floorboxselect



Step One — Select Floor Box Application



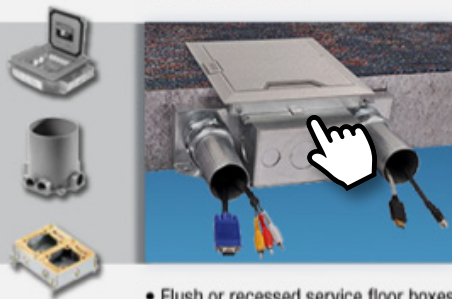
Thomas & Betts

Floor Box Selector

The **Thomas & Betts Floor Box Selector** makes it easy to identify the appropriate in-floor solution for power and communications services in any floor application. Simply identify the application from the four types shown below to begin the selection process. The **Selector** will provide a complete Bill of Material that includes all the necessary components for the application.

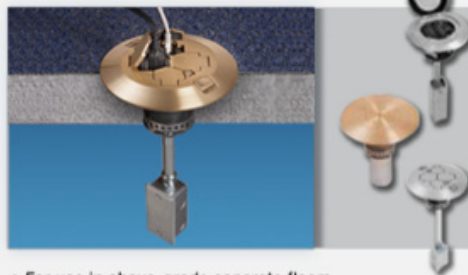
Click the desired application image from below to begin floor box selection.

Concrete Floors



- Flush or recessed service floor boxes
- Cast iron, stamped steel, or non-metallic floor boxes

Fire Rated Concrete Floors (Poke Through Systems)



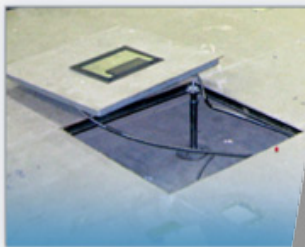
- For use in above-grade concrete floors
- Install in a core-drilled hole through the slab
- For new construction or renovation of existing buildings

Wood Sub-Floors



- Floor boxes for residential and light commercial applications
- Metallic and non-metallic boxes

Raised Access Floors



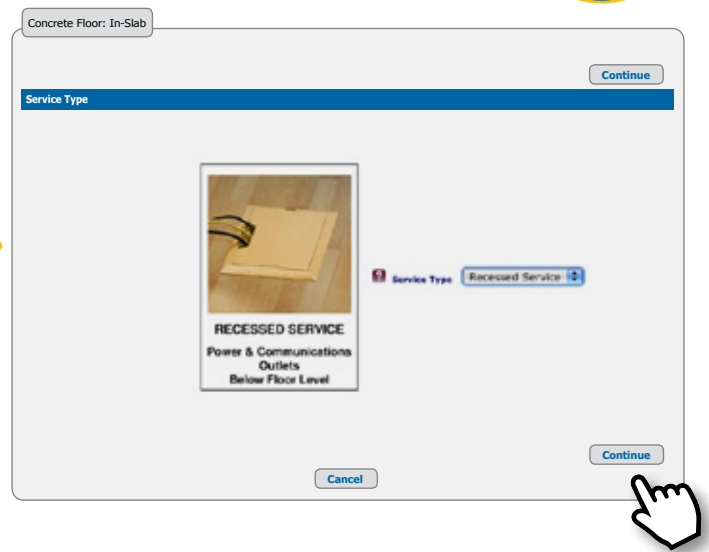
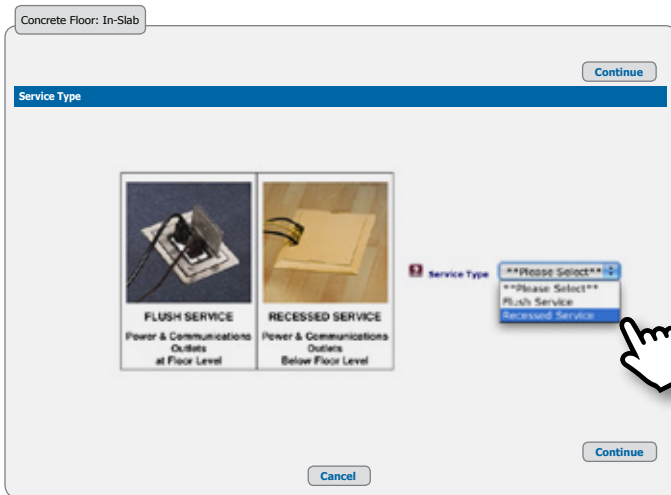
- Recessed service floor boxes designed to drop into an opening in a raised access floor

Questions? Call T&B Tech Support at 1-800-368-3683

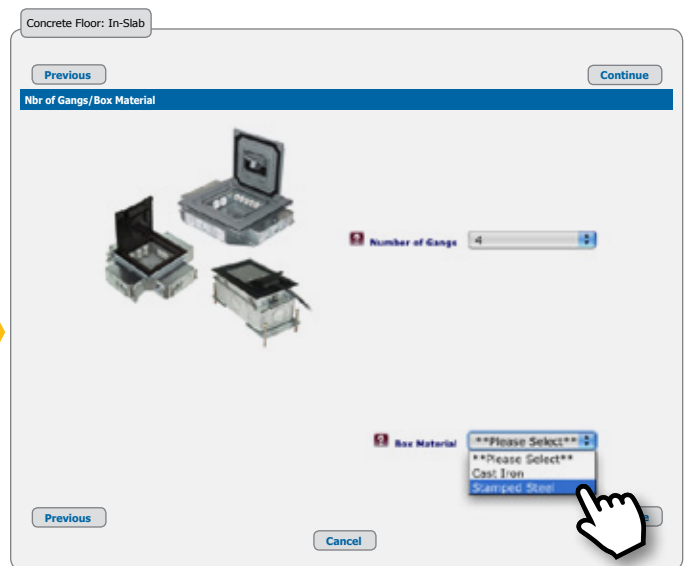
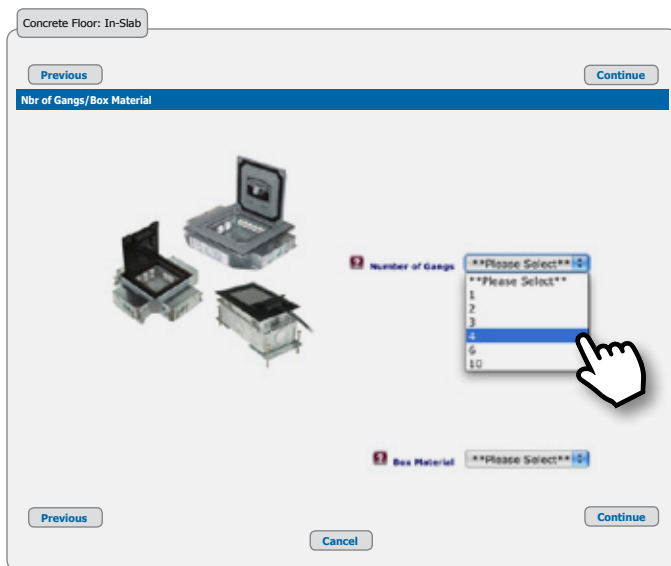
© 2011 Thomas & Betts Corporation. All rights reserved.



Step Two — Select Service Type



Step Three — Number of Gangs/Box Material



Step Four — Box Configuration, Cover Material/Color, Device Plate(s)




Concrete Floor: In-Slab

Previous Continue


Box Configuration/Covers/Carpet Plates

****Please Select****
2-1/2" Min Concrete Depth, 1" KO's (2" KO's on Bottom)
4-1/2" Min Concrete Depth, 2" KO's
3-1/2" Min Concrete Depth, 1-1/4" KO's




1 Duplex
2 Blank
3 GFCI
4 (6) Keystone
(4) Extron MAA

Box Configuration 4-1/2" Min Concrete Depth, 2" KO's




Cover Material/Color Brass

****Please Select****
Aluminum
Brass
Aluminum with Recess for Floor Covering
Brass with Recess for Floor Covering
Non-Metallic, Black
Non-Metallic, Gray
Non-Metallic, Beige
Non-Metallic, Brown




Device Plate: 1 GFCI Receptacle Plate


****Please Select****
Duplex Receptacle Plate
Blank Receptacle Plate
GFCI Receptacle Plate
(6) Keystone Data Plate
(4) Extron MAA Data Plate



Device Plate: 2 GFCI Receptacle Plate



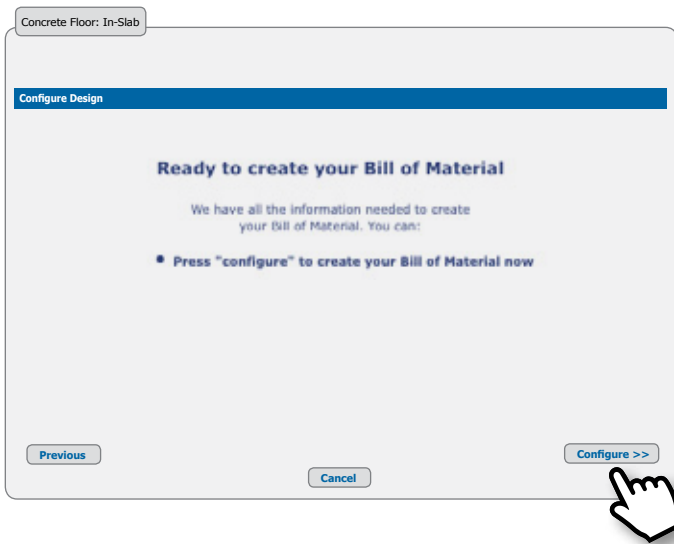
Device Plate: 3 (6) Keystone Data Plate



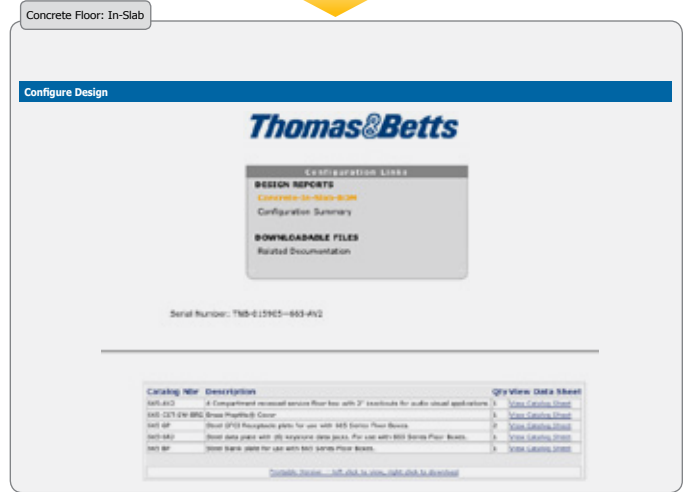
Device Plate: 4 Blank Receptacle Plate

Previous Cancel Continue

Step Five — Generate Bill of Material



Your Bill of Material is now being built.
You will soon have the opportunity to review your Bill of Material.

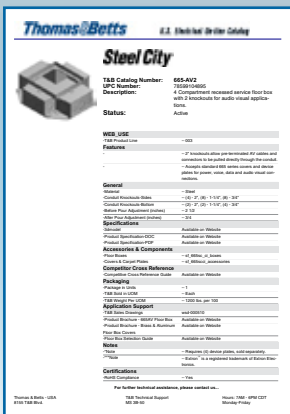


The links above provide you access to information specific to your configured Bill of Material. Click on the links below the "Configuration Results" heading to review your Bill of Material information.



What You Can Do...

View Catalog Sheet (including view/download 3D CAD models)



View Configuration Summary

Input Field	Value
Service Type	Recessed Service
Number of Gangs	4
Box Material	Stamped Steel
Box Configuration	4-1/2" Min Concrete Depth, 2" KO's
Cover Material/Color	Brass
Device Plate: 1	GFCI Receptacle Plate
Device Plate: 2	GFCI Receptacle Plate
Device Plate: 3	(5) Keystone Data Plane
Device Plate: 4	Blank Receptacle Plate
Number of Compartments	00
Configuration	00

Download Related Documentation



View Catalog Data Sheet... CAD 3D Models

Concrete Floor: In-Slab-BOM

Catalog Nbr	Description	Qty	View Data Sheet
665-AV2	4 Compartment recessed service floor box with 2" knockouts for audio visual applications.	1	View Catalog Sheet
665-CS1-SI6-6K3	Brass Maglite® Cover	1	View Catalog Sheet
965-6P	Steel GFCI Receptacle plate for use with 965 Series Floor Boxes.	2	View Catalog Sheet
665-6R2	Steel data plate with (6) Keystone data jacks. For use with 665 Series Floor Boxes.	1	View Catalog Sheet
665-6P	Steel Blank plate for use with 665 Series Floor Boxes.	1	View Catalog Sheet

[Printable Version -- left click to view, right click to download](#)



Steel City
1. Floor Boxes

T&B Catalog Number: **665-AV2**
 UPC Number: 78599104895
 Description: 4 Compartment recessed service floor box with 2 knockouts for audio visual applications.
 Status: Active

Features:
 2" knockouts allow pre-terminated AV cables and connectors to be pulled directly through the conduit.
 Accepts standard 665 series covers and device plates for power, video, data and audio visual connections.

General:
 Material: Steel
 Conduit Knockouts Sides: (0) 2" (0), 1 1/4" (0), 1 1/4"
 Conduit Knockouts Bottom: (2) 2" (2), 1 1/4" (0), 1 1/4"
 Before Four Adjustment (inches): 2 1/2
 After Four Adjustment (inches): 3/4

Specifications:
 View a CAD Drawing [View Viewset](#)
[Link to Required Software you can Download CAD Drawings](#)
 Product Specification [Click Here](#)
 Product Specification [Click Here](#)

Accessories & Components:
 Floor Boxes [Click Here](#)
 Covers & Carpet Plates [Click Here](#)

Competitor Cross Reference:
 Competitive Cross Reference Guide [Click Here](#)

Packaging:
 Outer Package: 1
 Package Height: 1 1/4
 Package Length: 12.12
 Package Width: 0.94
 T&B Sold in UOM: Each
 T&B Weight Per UOM: 1.200 lbs. per 100

Application Support:
 T&B Sales Drawings [pdf 000110](#)
 Product Brochure - 665AV Floor Box [Click Here](#)
 Product Brochure - Brass & Aluminum Floor Box Covers [Click Here](#)
 Floor Box Selection Guide [Click Here](#)

Notes:
 *Requires (4) device plates, sold separately.
 **Note: Extrem® is a registered trademark of Extrem Electronics.

Certifications:
 RoHS Compliance: Yes [Generate Compliance Certificate](#)

- AutoCAD
- 3D
- AutoCAD
- Catia
- Catia IUA
- Pro/E Wildfire
- SolidEdge
- SolidWorks
- Unigraphics
- Mechanical Desktop
- IGES
- Inventor AIS 10
- Inventor AIS 11
- SAT 2.0
- SAT 2.1
- SAT 3.0
- SAT 4.0
- SAT 5.0
- SAT 5.3
- SAT 6.0
- STEP 2.03

Download 3D Model to any CAD format your system requires.



View Configuration Summary

You can always view/print your Configuration Summary for reference when needed.



Configuration Links

DESIGN REPORTS

- Concrete-In-Slab-BOM
- Configuration Summary**

DOWNLOADABLE FILES

- Related Documentation



Configuration Summary

Input Field	Value
Service Type	Recessed Service
Number of Gangs	4
Box Material	Stamped Steel
Box Configuration	4-1/2" Min Concrete Depth, 2" KO's
Cover Material/Color	Brass
Device Plate: 1	GFCI Receptacle Plate
Device Plate: 2	GFCI Receptacle Plate
Device Plate: 3	(6) Keystone Data Plate
Device Plate: 4	Blank Receptacle Plate
Number of Compartments	00
Configuration	00

[Printable Version -- left click to view, right click to download](#)



Input Field	Value
Service Type	Recessed Service
Number of Gangs	4
Box Material	Stamped Steel
Box Configuration	4-1/2" Min Concrete Depth, 2" KO's
Cover Material/Color	Brass
Device Plate: 1	GFCI Receptacle Plate
Device Plate: 2	GFCI Receptacle Plate
Device Plate: 3	(6) Keystone Data Plate
Device Plate: 4	Blank Receptacle Plate
Number of Compartments	00
Configuration	00



Download Related Documentation

Need copies of all the technical data related to various items in your bill of material?

Thomas & Betts

Configuration Links

DESIGN REPORTS

- Concrete-In-Slab-BOM
- Configuration Summary

DOWNLOADABLE FILES

- Related Documentation



**Just check off the items you want...
and we will email them to you!**

That's all it takes to select a Thomas & Betts Steel City® or Carlon® Floor Box for your next job.

www.tnb.com/floorboxselect

*Thanks for considering Thomas & Betts.
We appreciate your business!*

Please ask your Thomas & Betts sales representative for a complete catalog of quality Thomas & Betts electrical products or visit us at www.tnb.com. For customer service, call 1-800-816-7809. For technical questions, call 1-888-862-3289.

© 2012 Thomas & Betts Corporation. All rights reserved. Printed in the U.S.A. 02/12

Thomas & Betts Corporation
Electrical Division
8155 T&B Boulevard
Memphis, TN 38125
901-252-5000
www.tnb.com

Product Submittal Package

Items to be included in Submittal Package...
Click on item(s) desired, and then click on the Go Button

Select All Items

T&B Catalog Number : 665-AV2

Data Sheet

On-line Web Data Sheet

Application Support

T&B Sales Drawings

Product Brochure - 665AV Floor Box

Product Brochure - Brass & Aluminum Floor Box Covers

Floor Box Selection Guide

Specifications

Product Specification-DOC

Product Specification-PDF

Competitor Cross Reference

Competitive Cross Reference Guide

Certifications

RoHS Compliance

T&B Catalog Number : 665-AV2

Data Sheet

On-line Web Data Sheet

Application Support

T&B Sales Drawings

Product Brochure - 665AV Floor Box

Product Brochure - Brass & Aluminum Floor Box Covers

Floor Box Selection Guide

Specifications

Product Specification-DOC

Product Specification-PDF

Competitor Cross Reference

Competitive Cross Reference Guide

Certifications

RoHS Compliance

T&B Catalog Number : 665-CST-SW-BRS

Data Sheet

On-line Web Data Sheet

Application Support

T&B Sales Drawings

T&B Instruction Sheets

Product Brochure - 665AV Floor Box

Product Brochure - Brass & Aluminum Floor Box Covers

Floor Box Selection Guide

Specifications

Product Specification-DOC

Product Specification-PDF

Competitor Cross Reference

Competitive Cross Reference Guide

T&B Catalog Number : 665 GP

Data Sheet

On-line Web Data Sheet

Application Support

Product Brochure - 665AV Floor Box

Product Brochure - 665CI Series Floor Box

Product Brochure - Brass & Aluminum Floor Box Covers

Floor Box Selection Guide

Product Brochure - MapTite Covers

Specifications

Product Specification-DOC

Product Specification-PDF

Competitor Cross Reference

Competitive Cross Reference Guide

Certifications

RoHS Compliance

Send to email address:

Note: Item(s) checked will be sent to you as email attachments

